

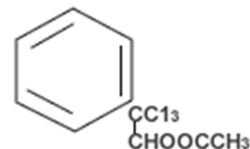
TECHNICAL DATA SHEET

CODE ROS

CAS # 90-17-5

NAME ROSE CRYSTAL
1 - Phenyl - 2,2,2 - trichloroethyl acetate

MOL WT. 267



STRUCTURE

PRODUCT SPECIFICATIONS

	PARAMETER	STANDARD RESULTS
1.	Appearance	White Crystals
2.	Condition at 25°C	Crystalline Solid
3.	Odor	Rose, powdery note
4.	Purity (%) by GC	> 98%
5.	Melting Point	86-88 °C

STORAGE Cool Closed Area

PACKING 25 kg HDPE Drums

APPLICATION It is used as a perfume, fixative in perfumes, in toilet soap perfume mixture and essential oils.