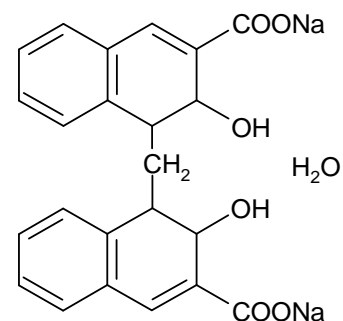


TECHNICAL DATA SHEET

CODE DSP
 CAS # 6640-22-8
 NAME DISODIUM PAMOATE
 MOL FORM. $C_{23}H_{14}Na_2O_6$
 MOL WT. 432.34



STRUCTURE

PRODUCT SPECIFICATIONS

	PARAMETER	STANDARD RESULTS
1.	Appearance	Pale yellow to greenish yellow powder
2.	Solubility	Soluble in water at 65°C
3.	Water Content	3.70% to 4.5%
4.	Pamoate Content	78.10% to 87.9%
5.	Sodium Content	9.90% to 12.40%
6.	Chloride Content	0 to 4.2%
7.	Assay	97 to 103%
8.	Colour Value	Not greater than 0.12 Abs
9.	Identification	Compare with Std TLC

STORAGE Dry Closed Area
 PACKING 25 kg HDPE Drums
 APPLICATION Intermediate for Parenlytal Pamoate